



Freedom of Information Act Publication Scheme	
Protective Marking	Not Protectively Marked
Publication Scheme Y/N	Y
Title	Partnership Plan
Version	1
Summary	For the Reduction of Crime, Disorder, Misuse of Drugs and Behaviour Damaging to the Environment in Brent 2008 - 2011
Branch / OCU	Brent QK
Date created	Aug 2008
Review date	Aug 2011

Partnership Plan

For the Reduction of Crime, Disorder, Misuse of Drugs and Behaviour Damaging to the Environment in Brent

Summary 2008-2011



The Brent Community Safety Partnership is made up of Brent Council, Metropolitan Police Service, London Fire Brigade, National Probation Service, Brent Teaching Primary Care Trust, British Transport Police, Brent Magistrates Court, Crown Prosecution Service and BRAVA

**Brent Crime Prevention Strategy Group (CPSG)
Summary of the Partnership Plan 2008-2011**

Introduction

The Crime and Disorder Act 1998 places a duty upon the 'responsible authorities' in each local authority area of England and Wales to: "formulate and implement a strategy for the reduction of crime, disorder, the misuse of drugs and behaviour damaging to the environment". The 'responsible authorities' who are legally required to undertake this work in Brent are:

- Brent Council
- Metropolitan Police Service
- Brent Teaching Primary Care Trust
- London Fire and Emergency Planning Authority
- Metropolitan Police Authority

These 5 authorities are the core members of Brent's Crime and Disorder Reduction Partnership. Recent revisions to the Crime and Disorder Act 1998 mean that this strategy must now be reflected in a three year partnership plan. The purpose of this plan is to show how the partnership will tackle these issues in the area. The plan will be revised annually to pick up on new priorities that may emerge from the annual strategic assessments.

Partnership Mission Statement and Values

To work together in partnership to make Brent "a safer community" for all. The values and beliefs, which underpin our mission, are:

1. We believe that a safe community is a basic right of all our local citizens.
2. We know that crime and fear of crime is of major concern to the public and we are determined to respond positively to this concern.
3. We recognise the key role that crime reduction and community safety must play in the process of social and economic regeneration and believe that a safer community will encourage local prosperity.
4. We believe that our strategy reflects the consensus and priorities of Brent's ethnically diverse community and provides the framework required to reduce crime and improve the quality of life for all people who live and work in Brent.
5. We will ensure that our action will provide direct benefits to local people and will enable us to make measurable progress in contributing to a safer community.

Priorities for 2008-2011

The Partnership conducted four exercises in order to arrive at our list of priorities and outcomes. For each outcome there are Local Area Agreement indicators and targets which are part of a set of 35 priority measures for Brent that have been negotiated with the government. The following outlines the three main priorities set, the outcomes and the targets that will be used to monitor progress.

1. Tackling and reducing **violence** in all its forms

There are three, quite distinct, areas of activity for this priority outcome, each utilising various techniques to achieve overall aims.

1. Domestic and Sexual Violence

- Implementation of coordinated community response to victims of domestic violence incorporating advocacy, multi-agency risk assessment conferencing and a specialist domestic violence court
- Prevention of domestic and sexual violence
- Early intervention

2. Guns, Knives and Gangs – the 'Not Another Drop' Programme

- Engagement of high risk young people
- Enforcement – bring offenders to justice and remove weapons
- Community engagement and support
- Ensure NAD programme is underpinned by evidence and understanding of the problem

3. Robbery

- Prevention by targeted interventions and awareness raising
- Enforcement
- Reassurance work with victims

Local Area Agreement Targets for our Violent Crime Outcome

No.	Measure	Definition	Target agreed
NI 15	Serious Violent Crime Rate. Number of most serious violent offences per 1,000 population	No of homicides, attempted murder, GBH, death by dangerous or careless driving under influence, death by aggravated vehicle taking x 1,000 population	New indicator and definition. 08/09 to be used to collect baseline. Target to be established for 09/10 and 10/11
Local LAA	Increasing the proportion of crimes for which domestic violence offenders are brought to justice through charge and prosecution at court. <i>(NB: This target will be reviewed after 08/09)</i>	<p>a) Proportion of incidents recorded where a suspect is present and an arrest is made for an incident recorded as DV related</p> <p>b) Proportion of domestic violence incidents which result in sanction detections (crimes for which someone is charged, summonsed, receives a caution or other formal sanction – including a fixed penalty notice.)</p> <p>c) Proportion of cases that reach court where the case is dropped due to no evidence being offered, judge directing or ordering acquittal, or a decision to discontinue.</p>	<p>51.2%</p> <p>37.4%</p> <p>26.3%</p>

2. Increasing confidence by providing reassurance, information and dealing effectively and positively with **anti-social behaviour at a neighbourhood level**

This will be achieved through the following means:

- Development of proactive, positive communications
- Reactive communications
- Multi-agency problem solving for neighbourhoods experiencing envirocrime, anti-social behaviour and crime
- Increasing the satisfaction of victims and witnesses with the way the police and council have tackled ASB.

Local Area Agreement Targets

Number	Measure	Definition	Target agreed
NI 24	Satisfaction with the way the police & council dealt with ASB	Percentage of victims of ASB who are satisfied with the overall service provided by the ASB Team operated by the Police and Council by responding to the question:- How would you rate the service received? % satisfied is defined by the total % of respondents who answer 'Excellent', 'Very Good', Good'	07/08 Baseline 78% (from 74 surveys) 08/09 81% 09/10 84% 10/11 87% (minimum of 100 surveys to be conducted per annum)
NI 49	Number of residential fires/ & number of primary fires & related casualties	Number of accidental fires in residential properties over three year period 2006/07 to 2008/09	2006/07 to 08/09 = 823 2006/07 = 236 2007/08 = 215 2008/09 = no more than 372
NI 195	Street cleanliness	Proportion of relevant land/highways assessed as having combined deposits of litter and detritus that fall below an acceptable level.	(LAA target set in 2006. To be reviewed at end of 08/09) 19% (LAA target set in 2006. To be reviewed at end of 08/09)

3. The **medium to long term prevention of crime by focussing on young people and those who are most at risk of being perpetrators or victims.**

This will be achieved through the following means:

- Reduce reoffending by targeted interventions with priority and prolific offenders
- Reducing youth offending through targeted prevention work with high risk young people
- Reducing offending through targeted work with substance misusing offenders
- Reducing reoffending through the resettlement of offenders
- Reducing crime by focussing on the most vulnerable victims

Local Area Agreement Targets

Number	Measure	Definition	Target agreed
NI 16	Serious acquisitive crime rate	Residential burglary, aggravated burglary, business and personal robbery, theft of and from m/v, aggravated vehicle taking x 1,000 population	07/08 baseline = 8689 08/09 = 8509 (-2.2%) 09/10 = 8263 (-5%) 10/11 = 8002 (-8%)
NI 40	Number of substance misusers in effective treatment	Crack and/or opiate users recorded as being in effective treatment (defined as being treated at tier 3 or 4 and maintained in treatment for 12 weeks)	07/08 baseline = 803 08/09 = 883 (+10%) 09/10 = 972 (+20%) 10/11 = 1069 (+30%)
NI 111	First time entrants to the Youth Justice System	Young people 10-17 who receive their first substantive outcome (reprimand or final warning or court disposal)	07/08 baseline = 246 08/09 = 239 (-2.85%) 09/10 = 229 (-6.9%) 10/11 = 217 (-11.8%)

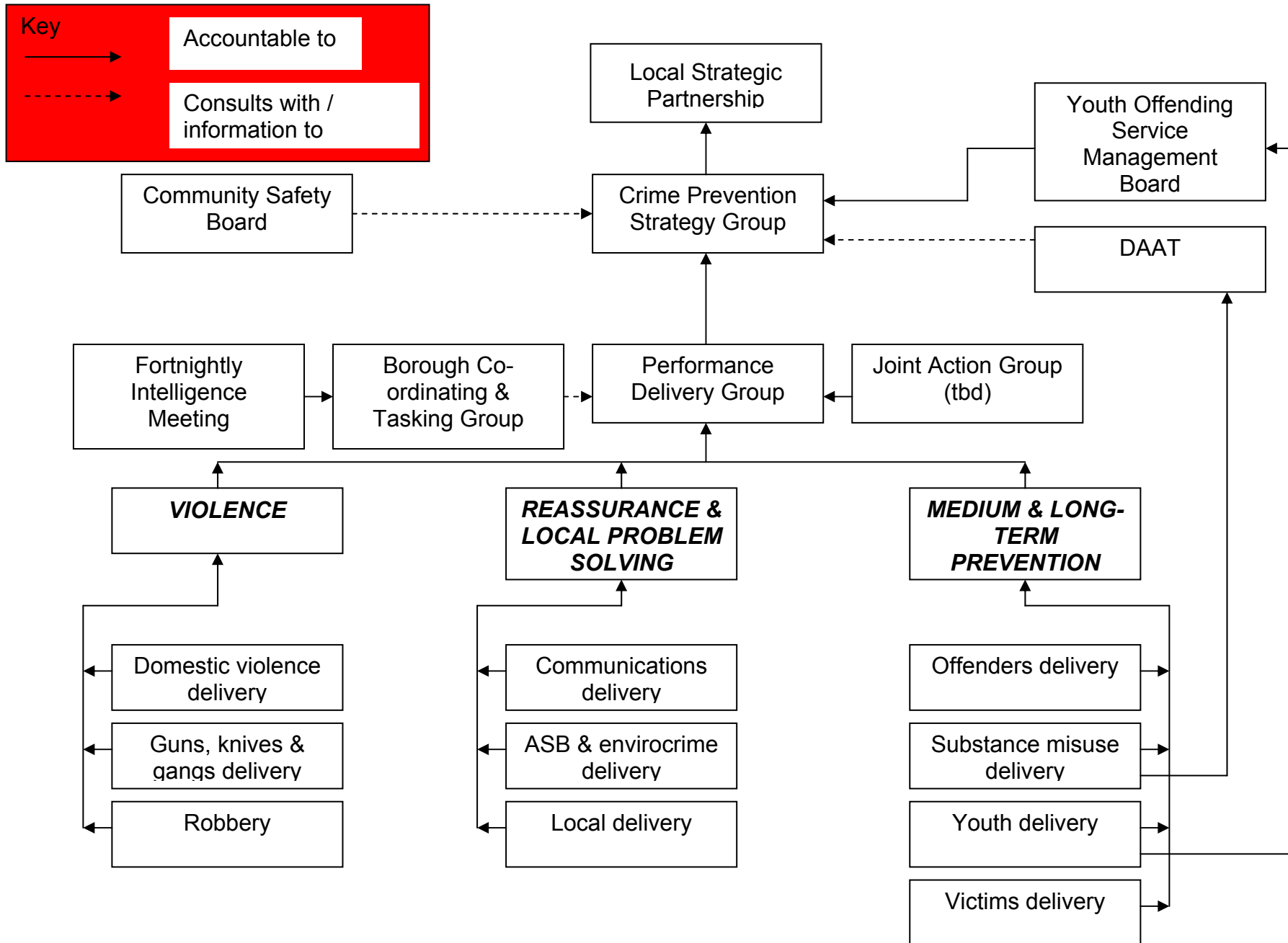
N.B .The details to deliver the priorities, outcomes, objectives, project leadership, resources and risks are in the full Partnership plan.

Brent CDRP delivery structure

The multi-faceted nature of the Partnership Plan necessitates a complex but consistent delivery structure. At the top sits the Local Strategic Partnership, to which all other borough strategic partnership bodies are accountable. In the case of this Plan, these key bodies are the Crime Prevention Strategy Group (CPSG), the Drug and Alcohol Action Team (DAAT) and the Youth Offending Service Management Board. The CPSG acts as the overarching strategic body and coordinates the contribution of these 3 bodies to the delivery of the Safer and Stronger outcomes in the Local Area Agreement.

Between these strategic groups and the actual delivery mechanisms, there is a CDRP Performance Delivery Group, which oversees performance. This group receives reports emanating from the three priority areas of violence, reassurance and prevention.

Within these three areas are a number of groups and other mechanisms, which actually carry out the operational delivery, usually around specific themes. Examples of groups at this level include the Burglary Partnership Forum, the Anti-Social Behaviour Steering Group, the Not Another Drop Steering Group, The Youth Crime Reduction Strategy Group and the Domestic Violence Operational Group.



Community Engagement

The Partnership will engage with Brent's many and diverse communities throughout the delivery of this plan. The aims of engagement are to:

- consult and seek the views of community members on the problems that the Partnership should deal with as a priority,
- to hear their views on how the current plan is working and to feedback the results of our efforts, and
- to engage them directly and actively in the delivery of the plan, as partners.

Community engagement will happen on three different levels:

Ward or Local Level

The identification of problems, priorities and solutions on a ward basis will occur through **Safer Neighbourhood Panels**. Alongside these panels, the Council is implementing a **Neighbourhood Working** initiative, involving local councillors consulting with local people in their wards, identifying a range of local issues that residents want to address and developing solutions. As crime and community safety are often raised in these consultation sessions, the police and the Council will be exploring how these two processes can be complementary and effective.

Theme Level

There are also community engagement activities at particular theme or outcome level. These include:

Violence: Guns, gangs and knives Not Another Drop (NAD) is the well established and well known title of the Partnership's programme to tackle guns, knives and gangs. A key strand of this programme is community engagement and many members of the Brent community are directly involved, as volunteers.

Violence: Domestic Violence Community based organisations such as the Asian Women's Resource Centre and Women's Aid are part of the delivery of activities to tackle and reduce domestic violence. In addition agencies that provide services to victim/survivors accessing the Specialist Domestic Violence Court will begin meeting after April to ensure service user consultation is part of the yearly monitoring framework for the SDVC.

Reassurance: Many of the activities planned under this theme will take the form of community engagement activities within Brent. This includes the ongoing use of the Community Safety Bus as a focal point for the provision of advice and information about the partnership and crime and the development of the Partnership website in which is situated in the BRAIN website (Brent Resource and Information Network).

Young people: Young people have been consulted and involved in the development of some youth projects, such as the web based community engagement tool which is part of the NAD programme. The Brent Youth Parliament have identified crime and community safety as one of their three task groups for the year and partnership officers have attended their meetings to support the group. Parliament members also been invited to participate in relevant steering groups.

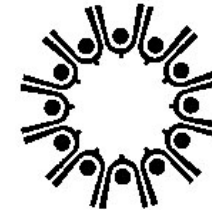
Substance misuse: The inclusion of service users in all stages of the commissioning, procuring, monitoring and reviewing of services is central to the work and mission of the Drug And Alcohol Team Partnership (DAAT). Community members also have access to training programmes funded by the DAAT.

Businesses and town centre areas: The Partnership also seeks the views and involvement of businesses through regular attendance and participation in the groups who meet to discuss issues in Kilburn, Wembley, Willesden and Harlesden and the industrial estate at Park Royal.

Strategic and Borough Wide Level

The Brent Community Safety Board is funded and supported by the MPA. It is the consultation forum for the police and the whole partnership. The agendas cover Borough wide and strategic issues. It meets bi-monthly and is attended by the Borough Commander, the Council Lead Member for Crime Prevention and Public Safety, Senior Community Safety officers and the Head of Substance Misuse. The chair of the Brent CSB attends the Crime Prevention Strategy Group

Members of the Brent Community Safety Partnership



To access a full copy of the Crime , Disorder and Misuse of Drugs Partnership Plan 2008-11 please telephone the Community Safety Team on 020 8937 1058

If you require further copies of this document or would like any further information about community safety please contact:

Brent Community Safety Team
Quality House,
249 Willesden Lane,
London NW2 5JH
Telephone: 020 8937 1058

This document is also available online at www.brentbrain.org.uk